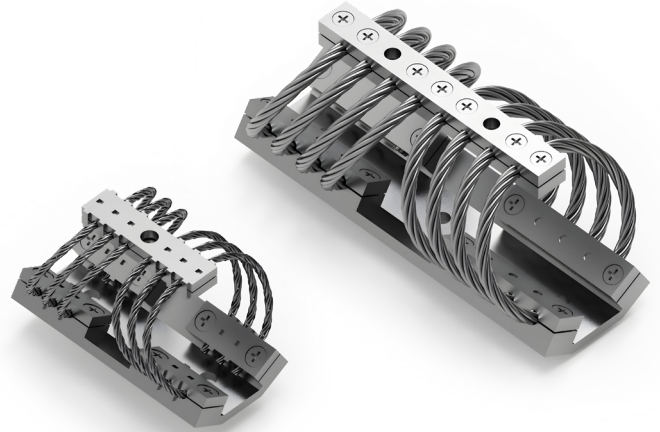


GSG

Features

GSG type stainless steel wire rope isolators are more stable and have better vibration isolation effect than GS series products. They have excellent performances such as large damping, low magnification, low solid frequency, large impact resistance, high temperature resistance, strong corrosion resistance, and easy use and installation. They are widely used in shipbuilding, aviation, vehicle-mounted equipment and instruments, electromechanical and other industries, with mature performance and quality, and excellent vibration reduction and noise reduction effects after use.

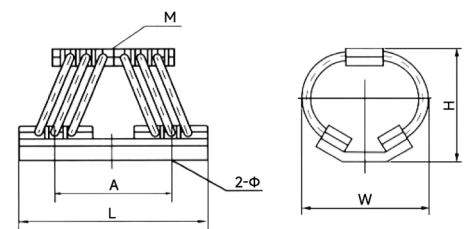


Technical Data

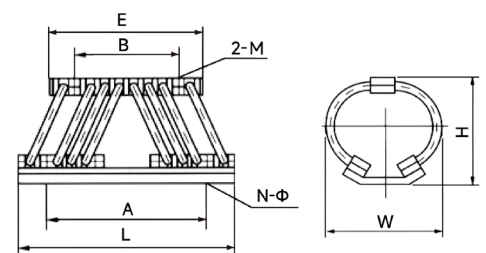
Type	Model No.	Horizontal Placement			Side Mounting			Weight (kg)	Damping Ratio (C/Cc)
		Rated Load (kg)	Static Deformation (mm)	Natural Frequency (Hz)	Rated Load (kg)	Static Deformation (mm)	Natural Frequency (Hz)		
GSG	0.5	0.5	2-4	7-11	0.35	3-5	7-10	0.14	>0.12
	1	1	2-4	7-11	0.7	3-5	7-10	0.15	
	2	2	2-4	7-11	1.4	3-5	7-10	0.3	
	3	3	2-4	7-11	2.1	3-5	7-10	0.35	
	5	5	2-4	7-11	3.5	3-5	7-10	0.35	
	8	8	2-5	7-11	5.6	3-5	7-10	0.45	
	10	10	2-5	7-11	7	4-7	7-10	0.45	
	12	12	2-5	7-11	8.5	4-7	7-10	0.6	
	15	15	2-5	7-11	11	4-7	7-10	0.6	
	20	20	2-5	7-11	15	4-7	7-10	0.68	
	30	30	3-6	7-11	21	4-7	7-10	1.15	
	40	40	3-6	7-11	30	4-7	7-10	1.3	
	60	60	4-7	7-10	45	5-8	7-10	2.3	
	80	80	4-7	7-10	60	5-8	7-10	2.4	
	100	100	4-7	7-10	70	5-8	7-10	3.9	
	150	150	4-7	7-10	105	5-8	7-10	4.6	
	200	200	4-7	7-10	140	5-8	7-10	4.1	
250	250	4-7	7-10	180	5-8	7-10	5.86		
300	300	4-7	7-10	210	5-8	7-10	6.3		

Installation Dimensions (mm)

Type	Model No.	L	E	W	H	A	B	M	Φ	N
GSG	0.5	81	40	48	45	49		4	4.6	2
	1	87	52	45	41	43		4	4.6	2
	2	106	64	59	54	56		5	5.6	2
	3	100	57	68	63	51		5	5.6	2
	5	95	57	62	56	60		6	6.7	2
	8	104	65	63	59	69		6	6.7	2
	10	104	65	62	59	69		6	6.7	2
	12	132	95	67	63	84	65	6	6.7	2
	15	132	95	64	59	80	65	6	6.7	2
	20	136	95	75	67	90	65	6	6.7	2
	30	160	117	82	76	114	52	6	6.7	2
	40	180	126	91	86	138	56	6	6.7	2
	60	226	160	106	100	172	72	8	9	3
	80	212	160	101	94	160	72	8	9	3
	100	266	200	131	110	202	92	8	9	3
	150	266	200	125	121	204	92	8	9	3
	200	256	200	127	111	190	92	8	9	3
250	289	218	135	120	198	100	10	11	3	
300	300	218	145	133	216	100	10	11	3	



GSG-0.5-10



GSG-12-300

(Note: n=3, one of the holes is at the center of the length of the base plate)