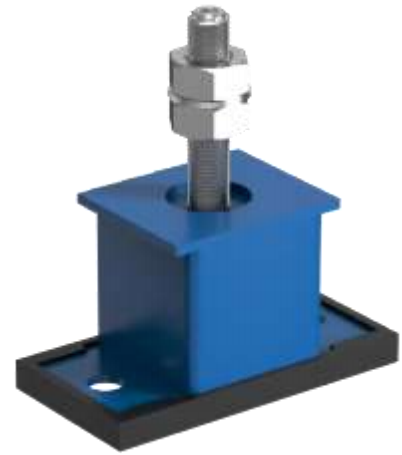


## JM2 60~80kg load range, 15 mm deflection.

### Features

JM2 spring vibration mount consists of a housing, a spring pressure cover, an anti-skid rubber pad, a vibration isolation spring and bolts.

The product has good resistance to lateral shearing. The fully enclosed steel housing can effectively prevent the equipment from shifting due to lateral loads. It does not tilt significantly under large lateral loads, ensuring the normal operation of the equipment, and fully restrains the left and right swing and vertical limit of the equipment. It can also be used for vibration reduction protection during equipment transportation.



### Technical Data

Type	Model No.	Technical Data				Installation Dimensions ( ±2mm )					
		Load ( kg )	Load ( Lbs )	Deformation ( mm )	Vertical Rigidity ( kg/mm )	L	W	H	C	D	S
JM2	6	6	13	10~15	0.40	104	54	92	76	11	M12x85
	8	8	18	10~15	0.53						
	10	10	22	10~15	0.67						
	15	15	33	10~15	1.00						
	20	20	44	10~15	1.33						
	30	30	66	10~15	2.00						
	40	40	88	10~15	2.67						
	50	50	110	10~15	3.33						
	60	60	132	10~15	4.00						
	70	70	154	10~15	4.67						
80	80	176	10~15	5.33							

