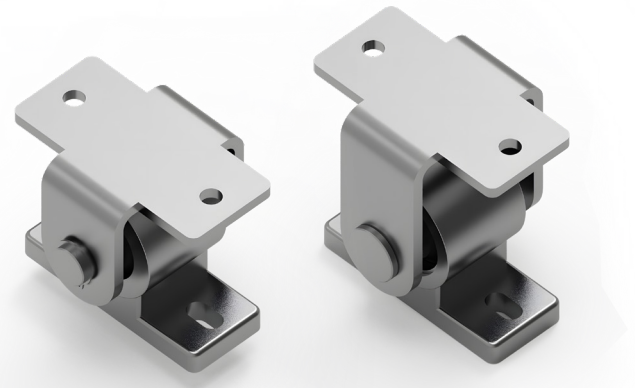


JC-150B

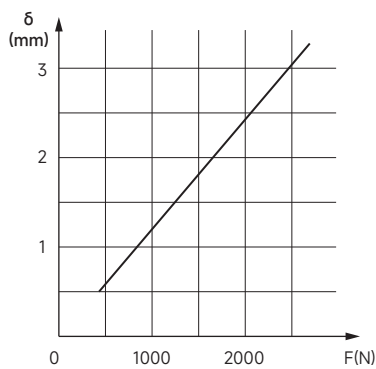
Features

The JC-150B back-mounted vibration isolator uses aluminum and stainless steel bases and brackets, and is particularly suitable for vibration isolation at the back and side of cabinet equipment with a high center of gravity.

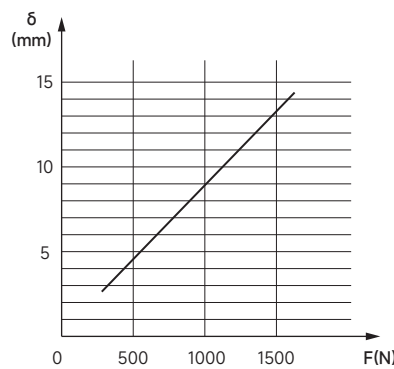


Technical Data

Type	Model No.	Z Axis					X Axis	Temperature (°C)	Weight (kg)
		Rated Load (kg)	Rated Deformation (mm)	Natural Frequency (Hz)	Ultimate Load (kg)	Static Stiffness (N/mm)	Static Stiffness (N/mm)		
JC	150B	150	1.9±0.6	≤13	≥350	1000	120	-40 ~ +85	0.82



R-Direction Static Delta Curve



Z-Direction Static Delta Curve

Installation Dimensions (mm)

